

# 50th wellbore Captured by SPACE®

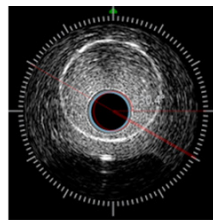
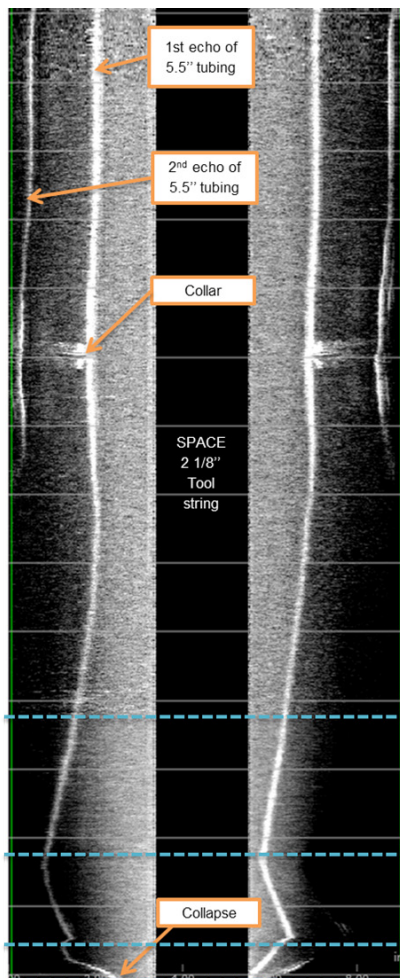
Operational Milestone - **SPACE® Panorama**



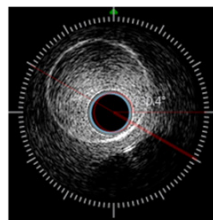
Tubing collapse revealed on the 50th operational deployment of Archer's unique **SPACE®** service.

## Suspected tubing damage

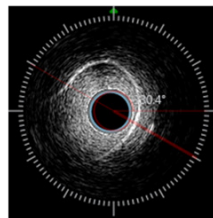
A major international operator suspected collapsed or otherwise damaged tubing to be present in a well. SPACE® Panorama was chosen as the best option to properly evaluate the geometry of the damaged section inside tubing.



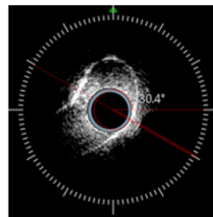
*Tubing starting to displace laterally*



*Maximum displacement*



*Deformation evident*



*Tubing collapse*

**SPACE®** is a technology platform designed to bring understanding to the borehole environment.

Whether the requirement is for high resolution imaging of the wellbore or fish, evaluation of restrictions or precise measurement of dimensions **SPACE®** has a proven track record in providing answers to the most difficult of questions.

Available in 3 distinct models to address a wide variety of applications, **SPACE®** has been successfully deployed in the North Sea, Middle East, Asia and North America over its 50 field operations

Contact  
Duncan Troup  
Global Product Champion  
+47 480 54130

[Duncan.Troup@archerwell.com](mailto:Duncan.Troup@archerwell.com)



# Archer